



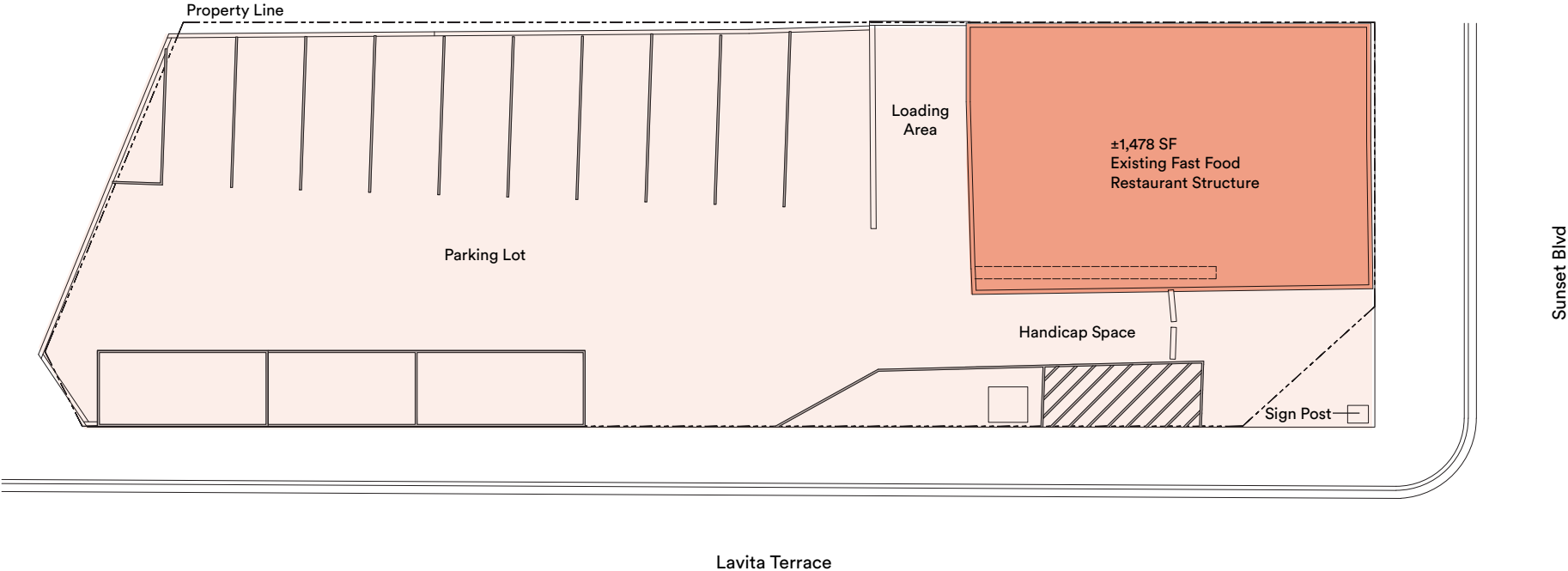
Available
1524 W Sunset Blvd
Echo Park

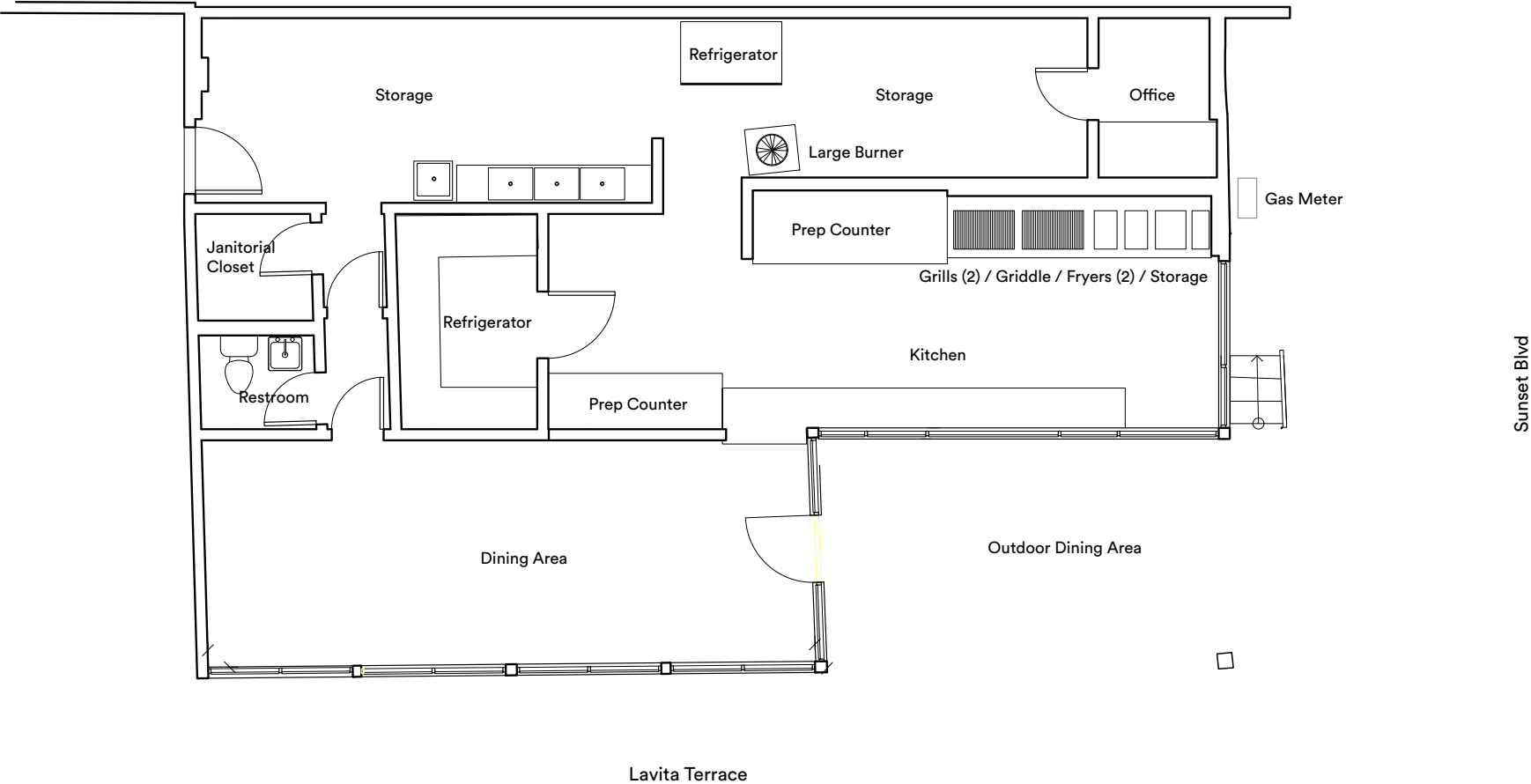


1524 W Sunset Blvd has been a classic burger joint and staple of Sunset Blvd in Echo Park since the 1970s. Today the property sits in the middle of one of LA’s most culturally and economically dynamic neighborhoods. It’s surrounded by a string of cafés, restaurants, bars and retail. The existing amenities are complimented by a diverse resident community, several in-progress or planned developments, and a mix of historic commercial and residential architecture.

Property Details	
Address	1524 W Sunset Blvd
City and Zip	Los Angeles 90026
APN	5404020001
Zone	Los Angeles C2-1L + Transit Priority Area
Current Use	Restaurant
Year Built	1970
Building SF	±1,478 SF
Land SF	±7,673 (0.18 acres)
Parking	13 Spaces On-Site
	Based on a review of permit history, the structure was granted a Certificate of Occupancy in 1971 that explicitly stated that no parking was required for the single story structure.
Price	Negotiable
Status	Current lease expires May 14, 2022 with no options to renew













Echo Park is an epicenter of LA's 'Eastside' cultural network that includes Silver Lake and Highland Park. It has a concentration of acclaimed restaurants and retail amidst an eclectic environment and history that includes an early 1900s counter-cultural movement, artist collectives, waves of immigrant communities, and the inspiration for a style of architecture and design.

With Sunset Blvd as its main arterial and commercial road, Echo Park continues to thrive as a diverse and dynamic neighborhood that draws visitors (and new residents) from throughout LA and beyond.

Creative Space's Neighborhood Series is a look at the places we love and work in from the perspective of a resident creative's photo lens.

In Echo Park, Creative Space invited Jaimie Lewis to share her view of the neighborhood she calls home. Jaimie owns and operates Tenzo, an online kitchen and homeware shop.

Photography by @Jaimie_lewis



1



2



3



4

1. Ostrich Farm across from 1524 W Sunset Blvd
2. Verdant pathway in the hills above Echo Park Ave
3. Shops along Echo Park Ave
4. The historic Taix French Restaurant on Sunset Blvd



The historic Jensen's Recreation Center on Sunset Blvd



The morning queue at Valerie Confections



Flora and views along Echo Park's residential streets



One of Echo Park's many stairs connecting streets and hills



Outside Cookbook



Shops along Sunset Blvd



Echo Barbershop



Tilda Wine



LG Beer & Wine Market



Rise and shine above Echo Park



Lowboy on Sunset Blvd



87 Walk Score (Very Walkable)

+34,000 Daily Car Count
on Sunset Blvd
at the Subject Property

Silver Lake

2 miles / ±5 minute drive

DTLA

2 miles / ±7 minute drive

Los Feliz

3 miles / ±8 minute drive

Frogtown

3 miles / ±8 minute drive

Atwater Village

3.5 miles / ±8 minute drive

Hollywood

5 miles / ±18 minute drive

Hancock Park

5 miles / ±18 minute drive

Highland Park

8 miles / ±15 minute drive



You Are Here

Geoffrey Anenberg

geoffrey@creativespace.us

Tel 323 243 2821

DRE #01831214

Tyler Stonebreaker

tyler@creativespace.us

Tel 310 310 5408

DRE #01328468

