



For Lease
242 S Anderson St
Boyle Heights

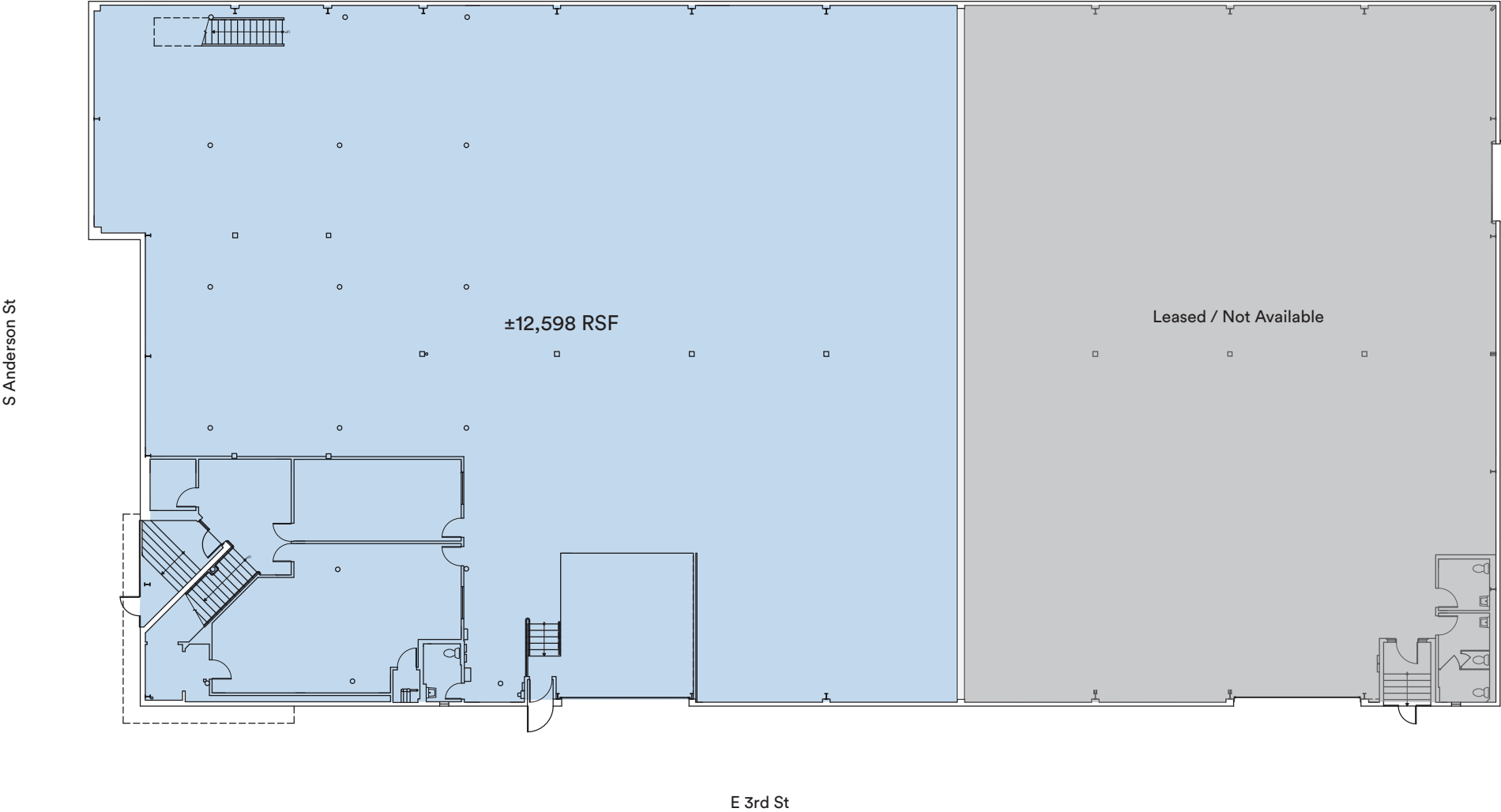


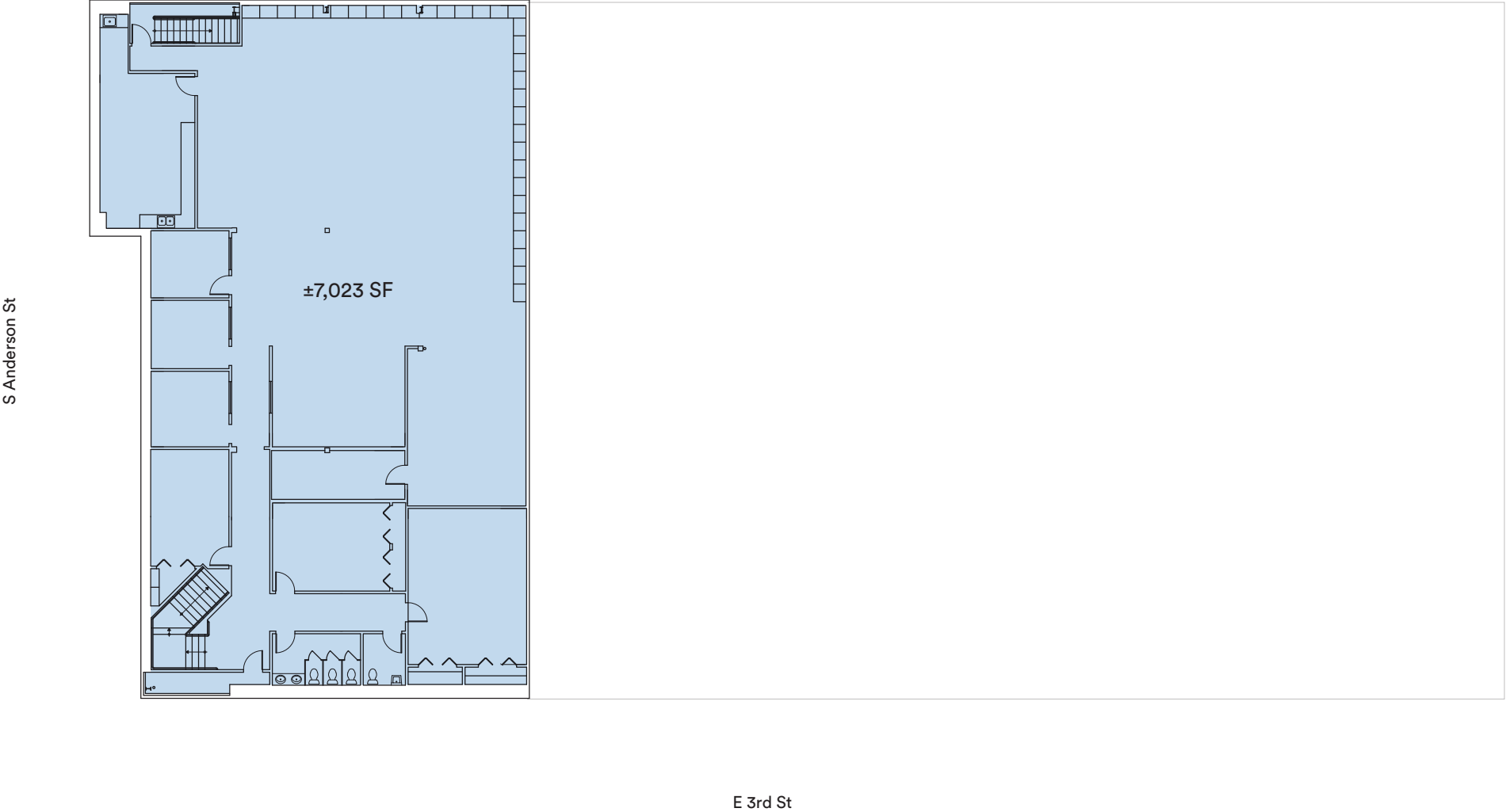
Located in the industrial flats of Boyle Heights and built in 1951, 242 S Anderson St is a warehouse building with a large and open first floor, and a built-out 2nd floor office.

Space	Type	RSF	Rate/SF/MO
242 S Anderson St (West)	Flex / Warehouse + Office	±19,621	Negotiable

Term: 3-5 Years
Occupancy: Available Now

- Features of 242 S Anderson St Include
- Reinforced masonry
 - 18-foot ceiling height on first floor
 - 3 phase, 400 amp, 240 volt power
 - HVAC
 - Well dock
 - Ample perimeter and street parking





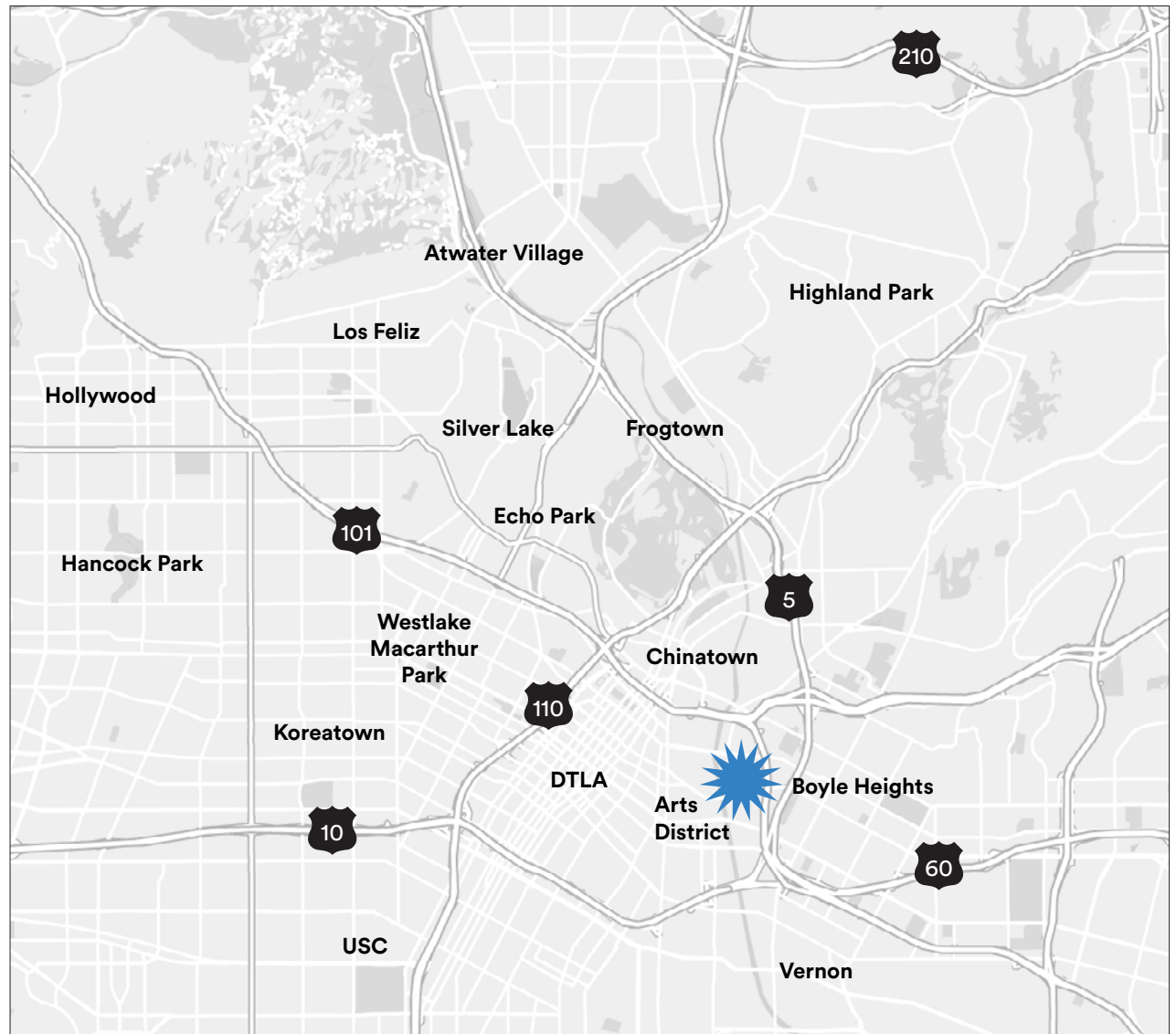








You Are Here



Geoffrey Anenberg
geoffrey@creativespace.us
Tel 323 243 2821
DRE #01831214

Tyler Stonebreaker
tyler@creativespace.us
Tel 310 310 5408
DRE #01328468